

Modeling System-Wide Adoption of Medicare for All (MFA)

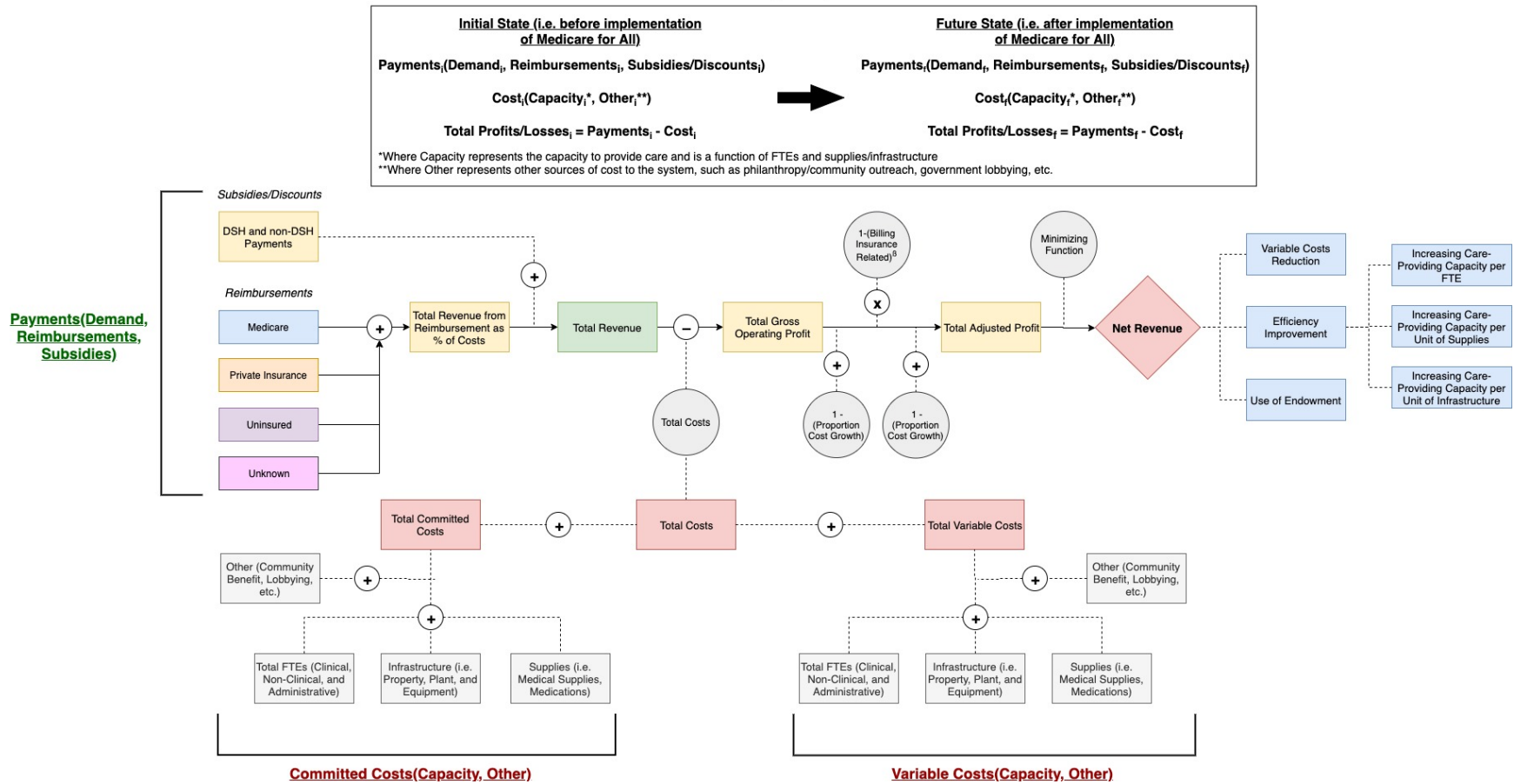


Figure 1. A general schematic illustrating the logic underlying a model for adoption of Medicare for All.

Modeling System-Wide Adoption of Medicare for All (MFA)

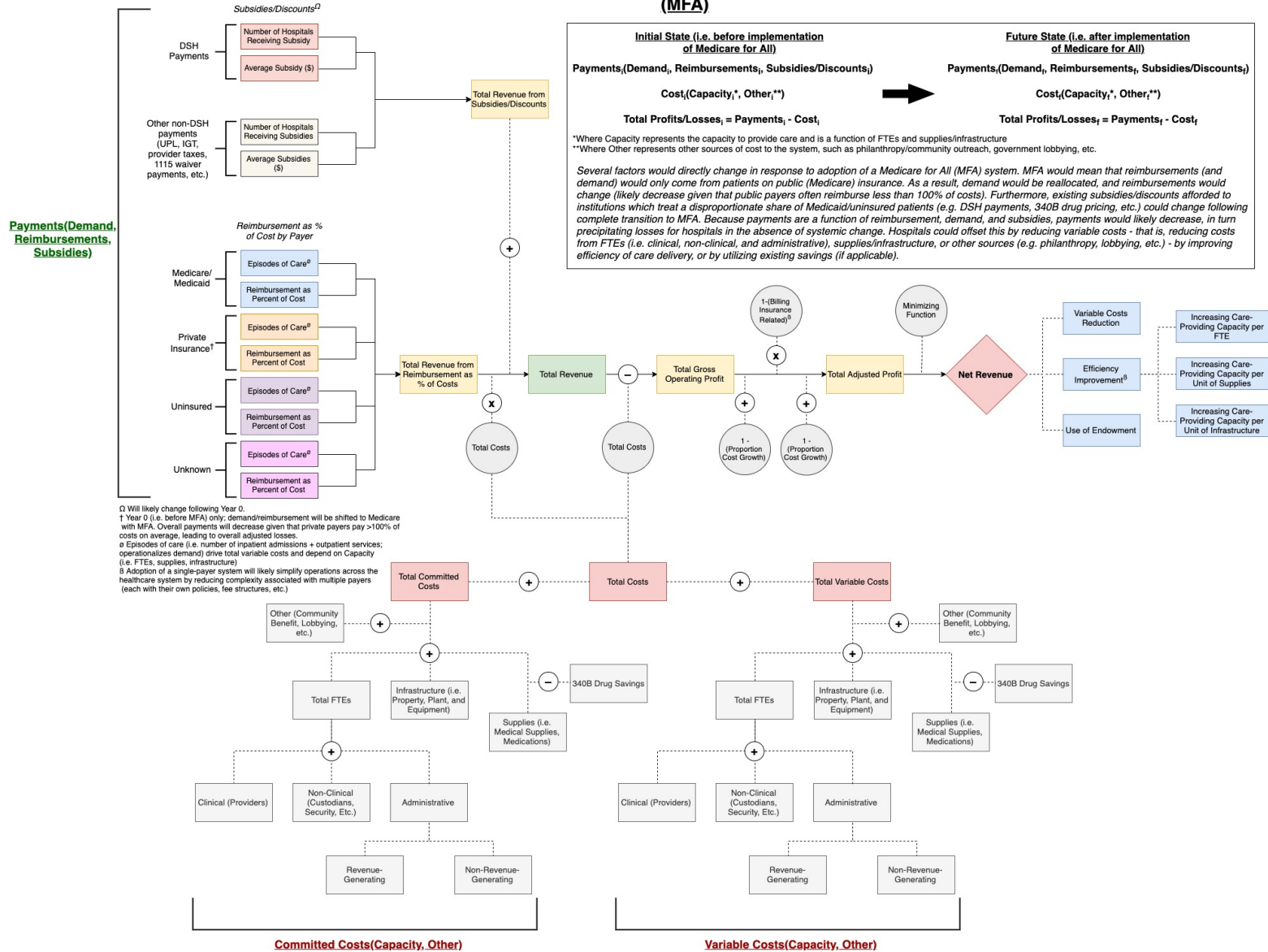


Figure 2. A more detailed schematic illustrating the logic underlying a model for adoption of Medicare for All.

Location of the Analysis

National

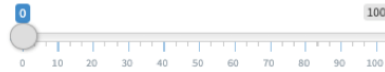
Number of Years to Iterate The Model For



Annual Improvement in Efficiency(% cost reduction)



Healthcare Cost Growth(%)



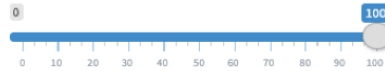
Target Medicare Reimbursement Rate(% of 2018 rate)



Reimbursement Phase Years



Percentage of Change Accounted for with FTE



Results

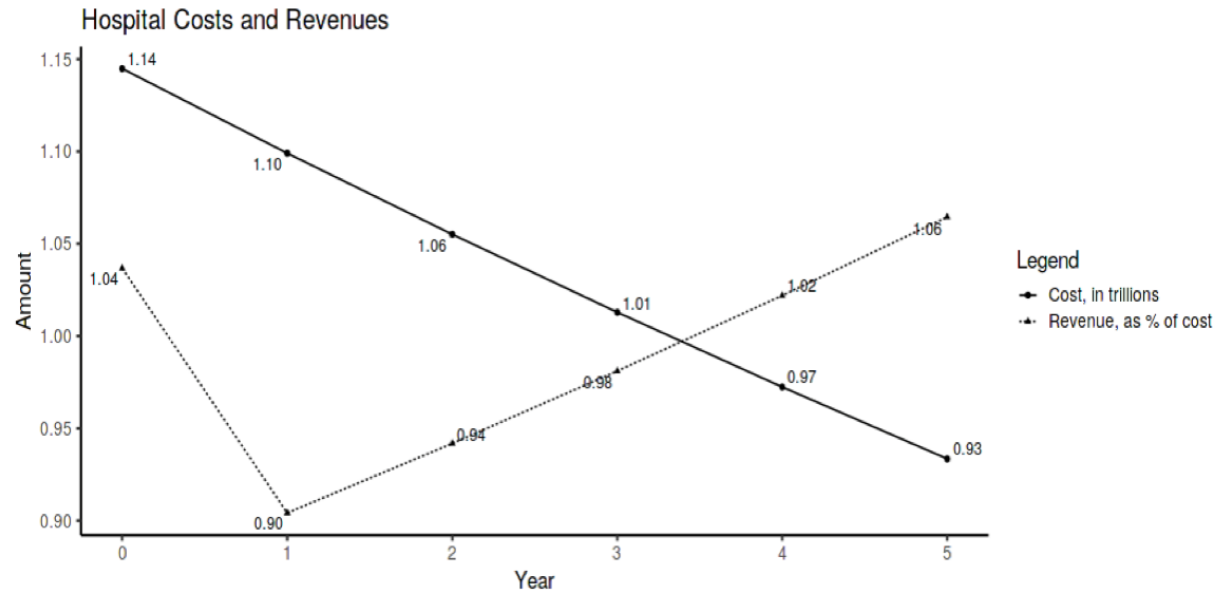


Figure 3. A proof of concept. This model would allow users to dynamically modulate key parameters in which they are interested or for which no consensus currently exists.